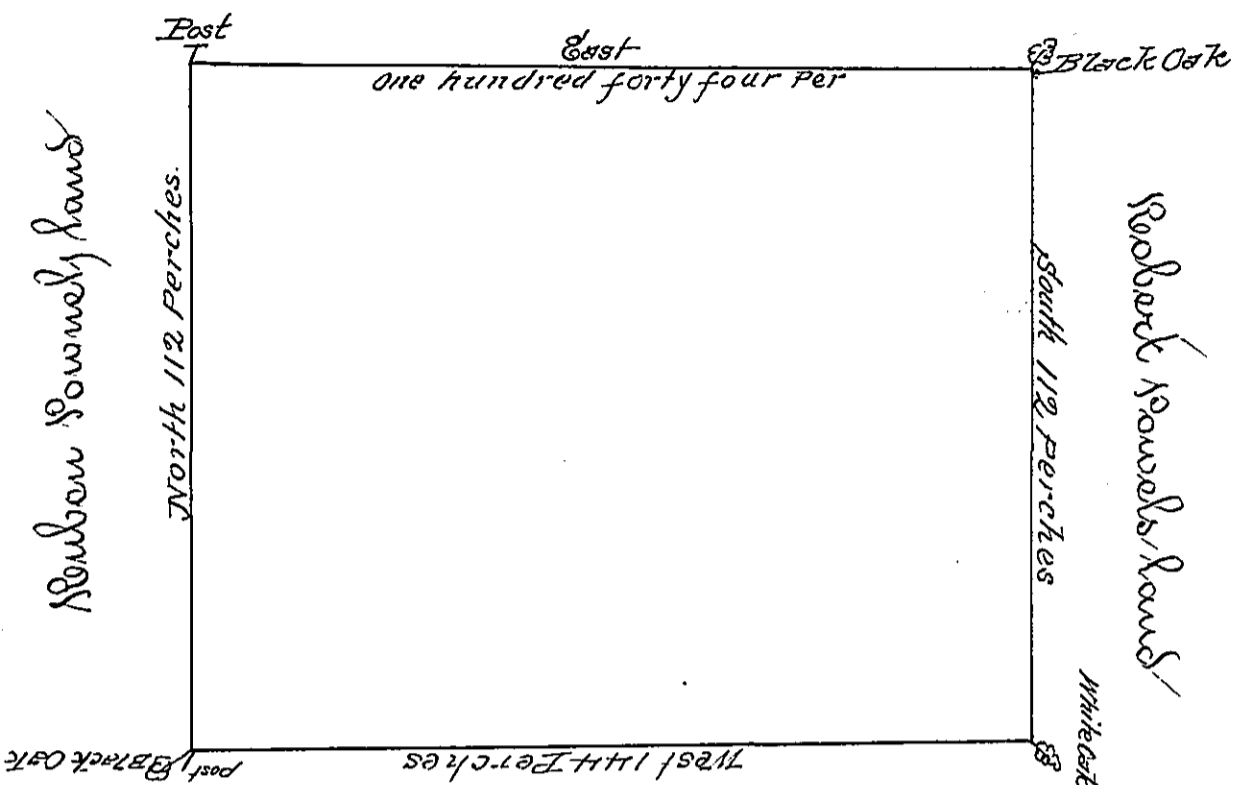


Robert Bonds land



The Draught of a tract of land set aside in Soulbury in the County of Bucks containing one hundred acres <sup>without allowance.</sup> Surveyed unto Thomas Ashton the 12<sup>th</sup> of the 6<sup>th</sup> month 1703 by virtue of a Warrant from the Commiss<sup>r</sup> ~~office~~ of Property dated the 31<sup>th</sup> of the 3<sup>d</sup> month 1703

Containing 95<sup>a</sup> with allow.

Drawn in the General Surv<sup>r</sup> Office the 20<sup>th</sup> of October 1703

IN TESTIMONY that the above is a copy of the original remaining on file in the Department of Internal Affairs of Pennsylvania, made conformably to an Act of Assembly approved the 16th day of February, 1833. I have hereunto set my Hand and caused the Seal of said Department to be affixed at Harrisburg, this first \_\_\_\_\_ day of December 1896.

*James W. Letts*  
Secretary of Internal Affairs.